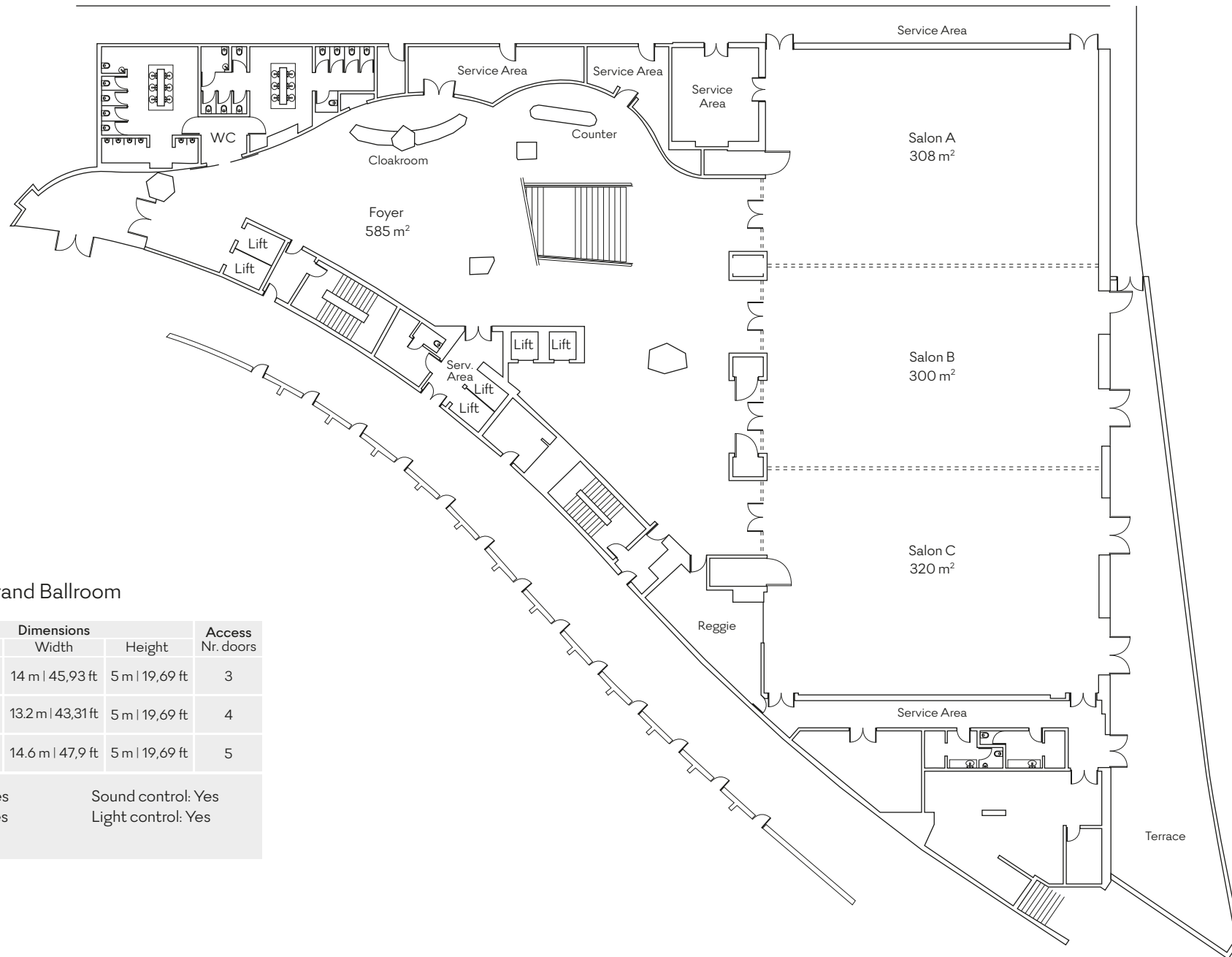




SAVOY PALACE

MEETING ROOMS LAYOUT

mice@savoysignature.com | www.savoysignature.com



Floor 0 Grand Ballroom

	Dimensions			Access Nr. doors
	Length	Width	Height	
A	22 m 72,18 ft	14 m 45,93 ft	5 m 19,69 ft	3
B	22 m 72,18 ft	13.2 m 43,31 ft	5 m 19,69 ft	4
C	22 m 72,18 ft	14.6 m 47,9 ft	5 m 19,69 ft	5

Air condition: Yes
Daylight: B, C Yes
Blackout: Yes

Sound control: Yes
Light control: Yes

Technical Information
Grand Ballroom

Total Area 928 m² | 9988,91 sq.ft

Interior Doors
Dimensions

	Length	Height			
1	1.7 m 5,57 ft	2.4 m 7,87 ft			
2	1.7 m 5,57 ft	2.4 m 7,87 ft			
3	1.7 m 5,57 ft	2.4 m 7,87 ft			
4	1.8 m 5,91 ft	2.5 m 8,2 ft	4.1	4.7 m 15,42 ft	4.5 m 14,76 ft
5	1.8 m 5,91 ft	2.5 m 8,2 ft	5.1	4.7 m 15,42 ft	4.5 m 14,76 ft
6	1.8 m 5,91 ft	2.5 m 8,2 ft	6.1	4.7 m 15,42 ft	4.5 m 14,76 ft
7	1.8 m 5,91 ft	2.5 m 8,2 ft	7.1	4.7 m 15,42 ft	4.5 m 14,76 ft
8	1.7 m 5,57 ft	2.4 m 7,87 ft			
9	1.7 m 5,57 ft	2.4 m 7,87 ft			

Exterior Doors
Dimensions

	Length	Height
10	2.3 m 7,55 ft	3.4 m 11,15 ft
11	2.3 m 7,55 ft	3.4 m 11,15 ft
12	2.3 m 7,55 ft	3.4 m 11,15 ft
13	1.3 m 4,27 ft	3.4 m 11,15 ft

